

CERTIFICATE OF LOCATION OF GOVERNMENT CORNER

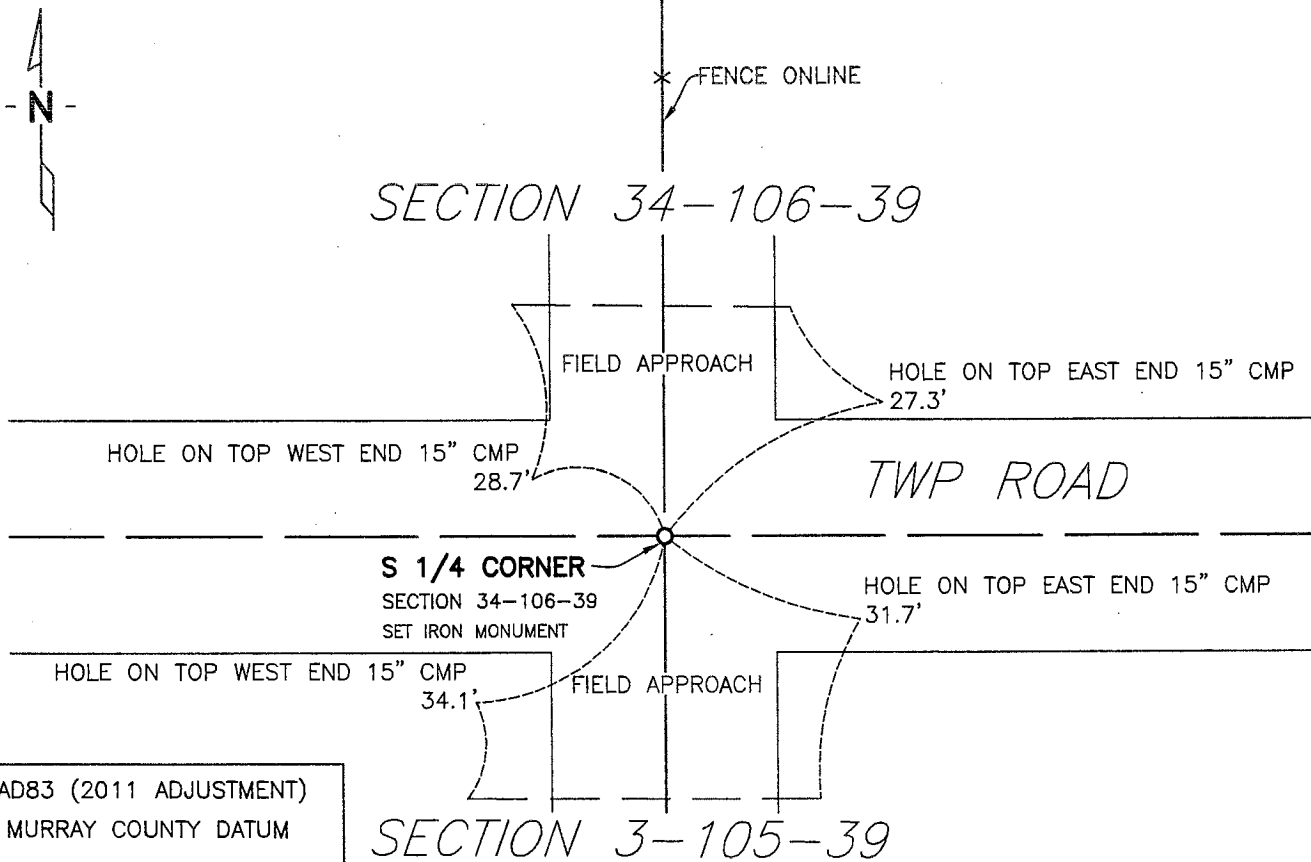
SOUTH QUARTER Corner of Section 34, Township 106 N, Range 39 W, 5th P.M.

STATE OF MINNESOTA, County of MURRAY

At the corner location shown on the sketch:

- On 5/10/13 found a NOTHING
DATE
- left monument as found, lowered monument, removed monument (explain)
- On 5/10/13 placed a 1/2"X24" IRON PIPE MONUMENT 6" DEEP IN CENTERLINE
DATE
GRAVEL ROAD

SKETCH OF REFERENCE TIES



NAD83 (2011 ADJUSTMENT)
MURRAY COUNTY DATUM
N= 131779.104
E= 566959.153

I:\NRCS\M33106137\TASK 12 D JANS DES MOINE CO\S4 34-106-39.DWG

Statement of evidence relative to this corner location is on back of page.

I hereby certify that this document and the data contained herein was prepared by me or under my direct supervision.

Rory Jensen 9/11/2013
Rory Jensen DATE

Registration No. 19789
 Land surveyor, Professional Engineer
 County Surveyor, County Engineer

OFFICE OF THE COUNTY RECORDER

County of _____

I hereby certify that this document was filed in the Co. Recorders office at ____M. on the _____ day of SEP 13 2013 A.D., 20____

County Recorder James V. Johnson
By _____, Deputy

DOCUMENT NO. _____

Statement of Evidence:

South Quarter Corner Section 34, Township 106 North, Range 39 West

- July 1861 Original Government Land Survey was done by J.W. Myers US Deputy Surveyor. At 40.00 chains he set quarter section post, drove charred stake and made mound of earth with trench and pits as per instructions.
- Jan. 20, 1880 Survey in Section 34 by J.W. Woolstancraft indicates a stone at the corner as per Survey Book in County Recorder's Office.
- May 10, 2013 Bolton & Menk Inc. when doing a survey for NRCS Jans Easement Boundary Survey dug a hole 10' wide by 15' east-west and 5' deep and found nothing. After digging and finding nothing Bolton & Menk Inc. survey crew set a 1/2" x 24" iron pipe monument 6" deep in the centerline of gravel road halfway and on line with the section corners.

Ties were placed on the corner and by GPS methods it was tied into the County Coordinate System NAD 83 (2011 Adjustment).

The evidence is not conclusive as to the true corner location, however the occupational and collateral evidence suggest that this is a reasonable location as to the corner. Additional information regarding the preparation of this certificate can be obtained by contacting: Bolton and Menk, Inc., Mankato, MN.